

This plan must be used with the attached 'Symbols' document.

Date Requested: 23/09/2022
 Job Reference: 27026610
 Site Location: 582727 144349
 Requested by:
 Miss Monique Elsom
 Your Scheme/Reference: 680350

Scale: 1:500 (When plotted at A3)

1. The position of the apparatus shown on this drawing is believed to be correct but the original landmarks may have been altered since the apparatus was installed.
2. The exact position of the apparatus should be verified - use approved cable avoidance tools prior to excavation using suitable hand tools.
3. It is essential that trial holes are carefully made avoiding the use of mechanical tools or picks until the exact location of all the cables have been determined.
4. It must be assumed that there is a service cable into each property, lamp column and street sign, etc.
5. All cables must be treated as being live unless proved otherwise by UK Power Networks.
6. The information proved must be given to all people working near UK Power Networks plant and equipment. Do not use plans more than 3 months after the issue date for excavation purposes.
7. Please be aware that electric cables/tines belonging to other owners of licensed electricity distribution systems may be present and it is your responsibility to identify their location.

1. UK Power Networks does not warrant that the information provided to you is correct. You rely upon it at your own risk.
 2. UK Power Networks does not exclude or limit its liability if it causes the death of any persons or causes personal injury to a person.
 3. Subject to paragraph 2 UK Power Networks has no liability to you in contract, in tort (including negligence), for breach of statutory duty or otherwise for any loss, damage, cost, claims, demands, or expenses that you or any third party may suffer or incur as a result of using the information provided whether for physical damage to property or for any economic loss (including without limitation loss of profit, loss of opportunity, loss of savings, loss of goodwill, loss of business, loss of use) or any special or consequential loss or damage whatsoever.
 4. This plan has been provided to you on the basis of the terms of use set out in the covering letter that accompanies this plan. If you do not accept and/or do not understand the terms of use set out in the covering letter you must not use the plan and must return it to the sender of the letter.
 5. You are responsible for the security of the information provided to you. It must not be given, sold or made available upon payment of a fee to a third party.

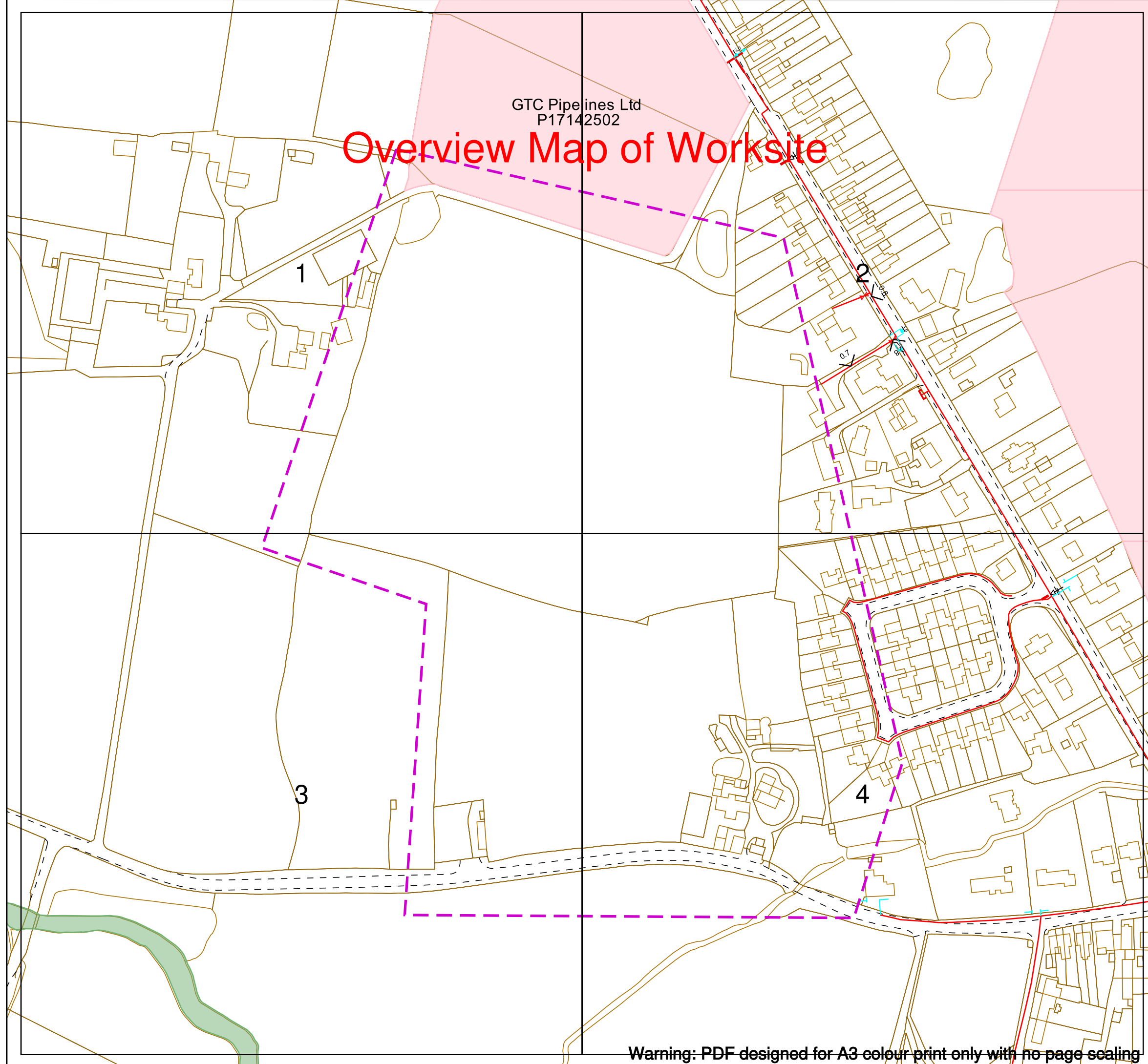
ALWAYS LOOK UP BEFORE YOU START WORK
Refer to HSE Guidance note GS6

IF IN DOUBT - ASK!
 PHONE 0800 056 5866
 EMERGENCY - If you damage a cable or line
 Phone 0800 783 8838 (24hrs) URGENTLY

Maps produced at 1:2500 scale are Geo-Schematics which show LV mains cables and overhead lines (in some cases all voltages). Prior to carrying out excavations you must refer to the 1:500 records to determine the location of all known underground plant and equipment.

APPENDIX F

SCOTIA GAS NETWORKS RECORDS



Overview Map of Worksite

GTC Pipelines Ltd
P17142502



Contact Us
SGN Safety Admin Team:
 0800 912 1722
Email:
 plantlocation@sgn.co.uk

Date Requested: 23/09/2022
 Job Reference: 27026610
 Site Location: 582895 144642
 Requested by: Miss Monique Elsom
 Your Scheme/Reference: 680350

Scale: 1:2050 (When plotted at A3)

This plan shows the location of those pipes owned by Scotia Gas Networks (SGN) by virtue of being a licensed Gas Transporter (GT). Gas pipes owned by other GTs or third parties may also be present in this area but are not shown on this plan. Information with regard to such pipes should be obtained from the relevant owners. No warranties are given with regard to the accuracy of the information shown on this plan. Service pipes, valves, siphons, sub-connections etc. are not shown but their presence should be anticipated. You should be aware that a small percentage of our pipes/assets may be undergoing review and will temporarily be highlighted in yellow. If your proposed works are close to one of these pipes, you should contact the SGN Safety Admin Team on 0800 912 1722 for advice. No liability of any kind whatsoever is accepted by SGN or its agents, servants or sub-contractors for any error or omission contained herein. Safe digging practices, in accordance with HS (G)47, must be used to verify and establish the actual position of mains, pipes, services and other apparatus on site before any mechanical plant is used. It is your responsibility to ensure that plant location information is provided to all persons (whether direct labour or sub-contractors) working for you on or near gas apparatus. Information included on this plan should not be referred to beyond a period of 28 days from the date of issue.

Report damage immediately – KEEP EVERYONE AWAY FROM THE AREA
0800 111 999

Low Pressure Mains	
Medium Pressure Mains	
Intermediate Pressure Mains	
High Pressure Mains	
LAs	
GTs	
SSSIs	

Some Examples Of Plant Items
 Valve Syphon Depth of Cover Diameter Change Material Change

Digsite: Line: Area:



This plan is reproduced from or based on the OS map by Scotia Gas Networks plc, with the sanction of the controller of HM Stationery Office. Crown Copyright Reserved. Southern Gas – 100044373 and Scotland Gas – 100044366.



SGN
Your gas. Our network.

Contact Us

SGN Safety Admin Team:
0800 912 1722
Email:
plantlocation@sgn.co.uk

Date Requested: 23/09/2022
Job Reference: 27026610
Site Location: 582895 144642
Requested by: Miss Monique Elsom
Your Scheme/Reference: 680350

Scale: 1:1000 (When plotted at A3)

This plan shows the location of those pipes owned by Scotia Gas Networks (SGN) by virtue of being a licensed Gas Transporter (GT). Gas pipes owned by other GTs or third parties may also be present in this area but are not shown on this plan. Information with regard to such pipes should be obtained from the relevant owners. No warranties are given with regard to the accuracy of the information shown on this plan. Service pipes, valves, siphons, sub-connections etc. are not shown but their presence should be anticipated. You should be aware that a small percentage of our pipes/assets may be undergoing review and will temporarily be highlighted in yellow. If your proposed works are close to one of these pipes, you should contact the SGN Safety Admin Team on 0800 912 1722 for advice. No liability of any kind whatsoever is accepted by SGN or its agents, servants or sub-contractors for any error or omission contained herein. Safe digging practices, in accordance with HS (G)47, must be used to verify and establish the actual position of mains, pipes, services and other apparatus on site before any mechanical plant is used. It is your responsibility to ensure that plant location information is provided to all persons (whether direct labour or sub-contractors) working for you on or near gas apparatus. Information included on this plan should not be referred to beyond a period of 28 days from the date of issue.

Report damage immediately – KEEP EVERYONE AWAY FROM THE AREA
0800 111 999

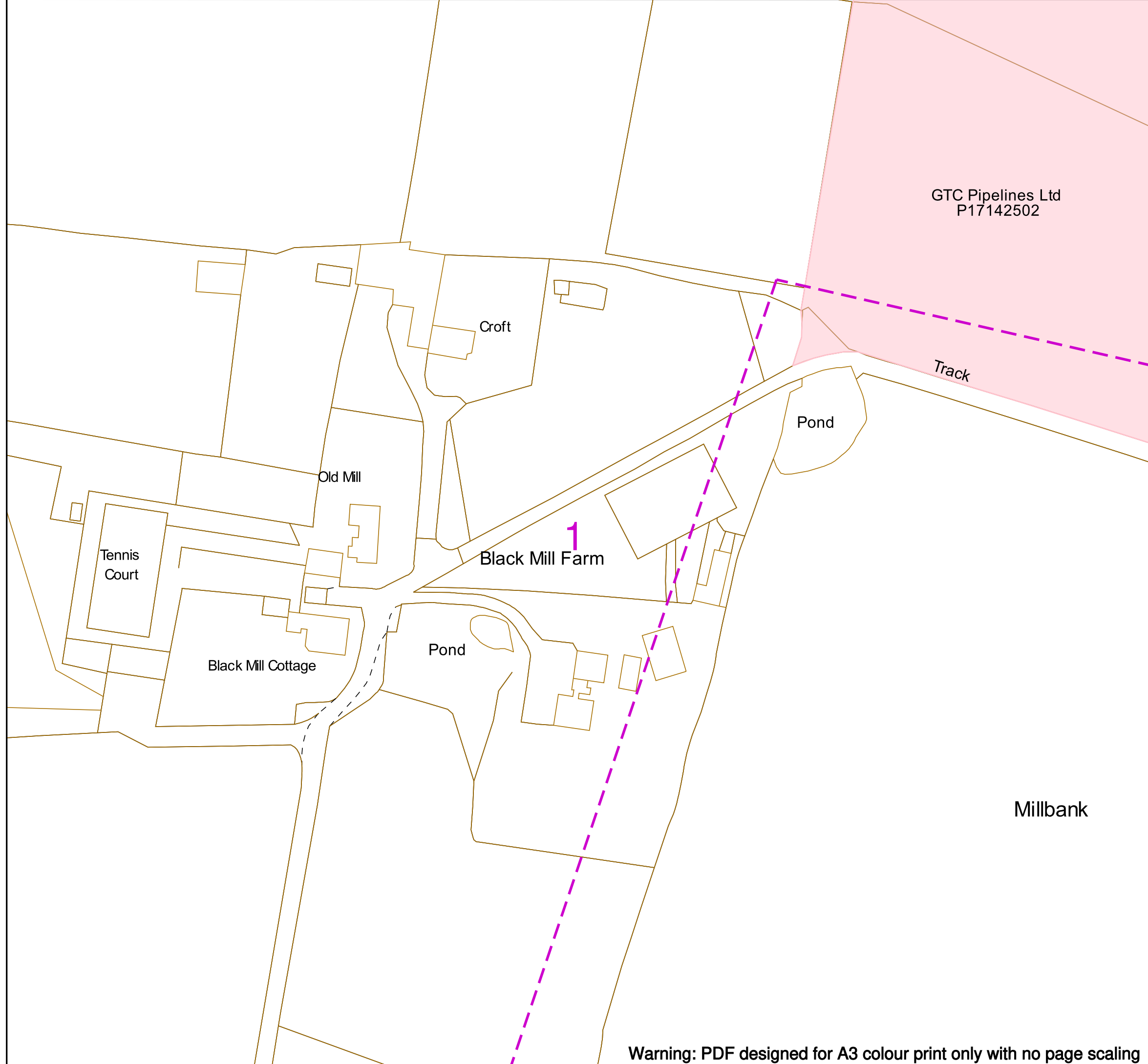
Low Pressure Mains	
Medium Pressure Mains	
Intermediate Pressure Mains	
High Pressure Mains	
LAs	
GTs	
SSSIs	

Some Examples Of Plant Items
Valve Syphon Depth of Cover Diameter Change Material Change

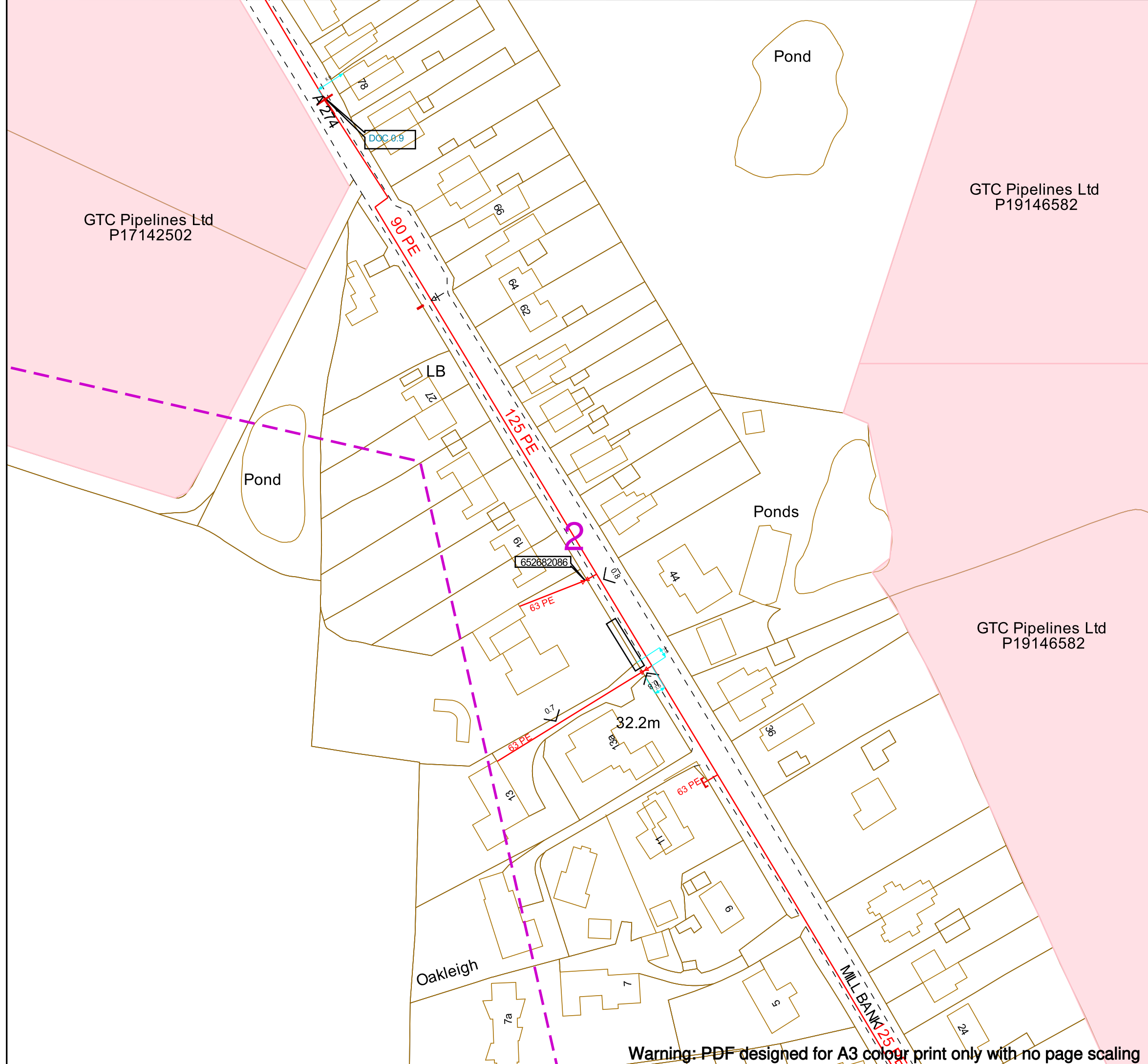
Digsite: Line: Area:



This plan is reproduced from or based on the OS map by Scotia Gas Networks plc, with the sanction of the controller of HM Stationery Office. Crown Copyright Reserved. Southern Gas – 100044373 and Scotland Gas – 100044366.



Warning: PDF designed for A3 colour print only with no page scaling



Contact Us
SGN Safety Admin Team:
 0800 912 1722
Email:
 plantlocation@sgn.co.uk

Date Requested: 23/09/2022
 Job Reference: 27026610
 Site Location: 582895 144642
 Requested by: Miss Monique Elsom
 Your Scheme/Reference: 680350
 Scale: 1:1000 (When plotted at A3)

This plan shows the location of those pipes owned by Scotia Gas Networks (SGN) by virtue of being a licensed Gas Transporter (GT). Gas pipes owned by other GTs or third parties may also be present in this area but are not shown on this plan. Information with regard to such pipes should be obtained from the relevant owners. No warranties are given with regard to the accuracy of the information shown on this plan. Service pipes, valves, siphons, sub-connections etc. are not shown but their presence should be anticipated. You should be aware that a small percentage of our pipes/assets may be undergoing review and will temporarily be highlighted in yellow. If your proposed works are close to one of these pipes, you should contact the SGN Safety Admin Team on 0800 912 1722 for advice. No liability of any kind whatsoever is accepted by SGN or its agents, servants or sub-contractors for any error or omission contained herein. Safe digging practices, in accordance with HS (G)47, must be used to verify and establish the actual position of mains, pipes, services and other apparatus on site before any mechanical plant is used. It is your responsibility to ensure that plant location information is provided to all persons (whether direct labour or sub-contractors) working for you on or near gas apparatus. Information included on this plan should not be referred to beyond a period of 28 days from the date of issue.

Report damage immediately – KEEP EVERYONE AWAY FROM THE AREA
0800 111 999

Low Pressure Mains	
Medium Pressure Mains	
Intermediate Pressure Mains	
High Pressure Mains	
LAs	
GTs	
SSSIs	

Some Examples Of Plant Items

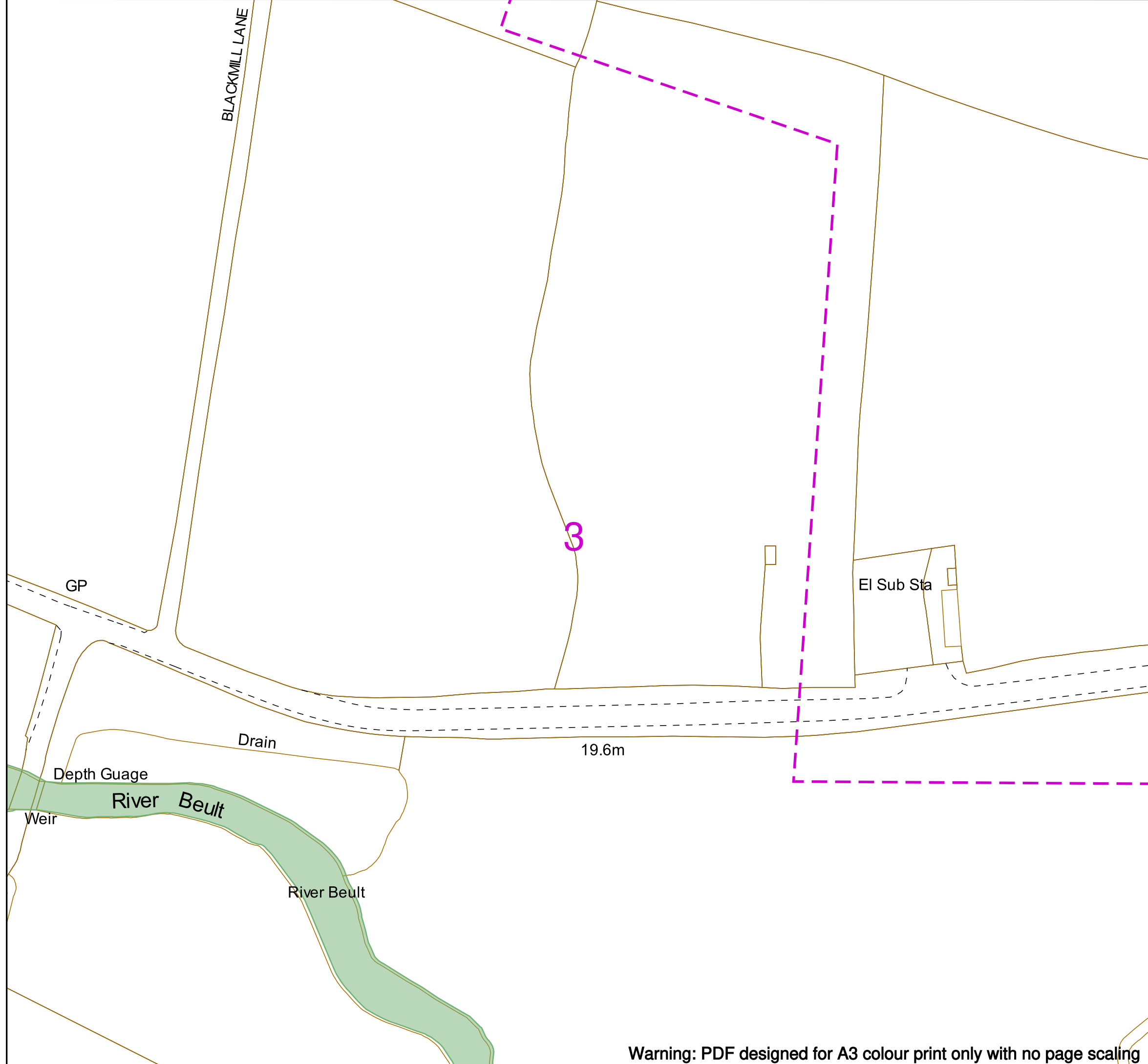
Valve		Syphon		Depth of Cover		Diameter Change		Material Change	
-------	--	--------	--	----------------	--	-----------------	--	-----------------	--

Digsite: Line: Area:



This plan is reproduced from or based on the OS map by Scotia Gas Networks plc, with the sanction of the controller of HM Stationery Office. Crown Copyright Reserved. Southern Gas – 100044373 and Scotland Gas – 100044366.

Warning: PDF designed for A3 colour print only with no page scaling



Contact Us
SGN Safety Admin Team:
 0800 912 1722
Email:
 plantlocation@sgn.co.uk

Date Requested: 23/09/2022
 Job Reference: 27026610
 Site Location: 582895 144642
 Requested by: Miss Monique Elsom
 Your Scheme/Reference: 680350
 Scale: 1:1000 (When plotted at A3)

This plan shows the location of those pipes owned by Scotia Gas Networks (SGN) by virtue of being a licensed Gas Transporter (GT). Gas pipes owned by other GTs or third parties may also be present in this area but are not shown on this plan. Information with regard to such pipes should be obtained from the relevant owners. No warranties are given with regard to the accuracy of the information shown on this plan. Service pipes, valves, siphons, sub-connections etc. are not shown but their presence should be anticipated. You should be aware that a small percentage of our pipes/assets may be undergoing review and will temporarily be highlighted in yellow. If your proposed works are close to one of these pipes, you should contact the SGN Safety Admin Team on 0800 912 1722 for advice. No liability of any kind whatsoever is accepted by SGN or its agents, servants or sub-contractors for any error or omission contained herein. Safe digging practices, in accordance with HS (G)47, must be used to verify and establish the actual position of mains, pipes, services and other apparatus on site before any mechanical plant is used. It is your responsibility to ensure that plant location information is provided to all persons (whether direct labour or sub-contractors) working for you on or near gas apparatus. Information included on this plan should not be referred to beyond a period of 28 days from the date of issue.

Report damage immediately – KEEP EVERYONE AWAY FROM THE AREA
0800 111 999

Low Pressure Mains	
Medium Pressure Mains	
Intermediate Pressure Mains	
High Pressure Mains	
LAs	
GTs	
SSSIs	

Some Examples Of Plant Items

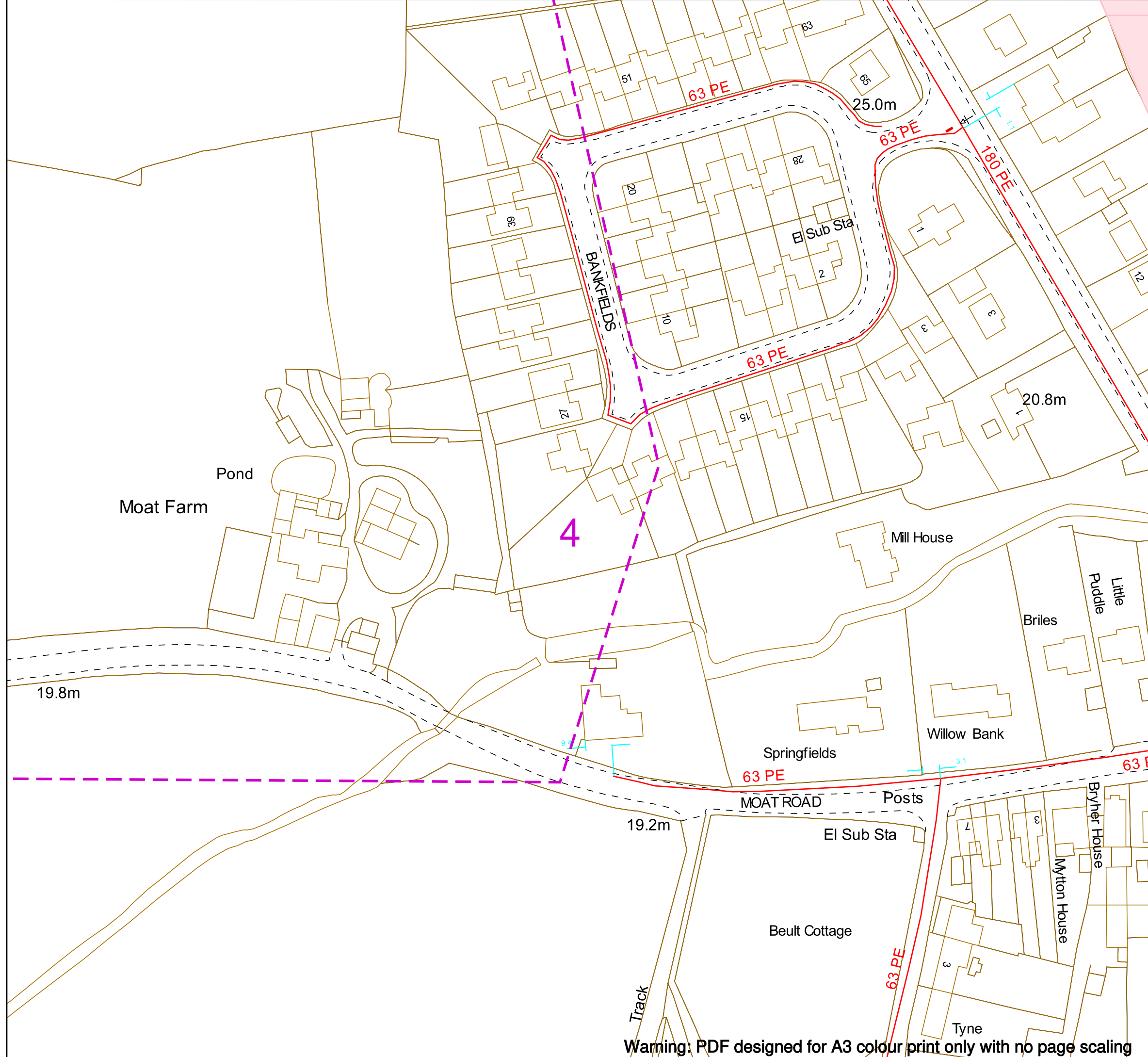
Valve		Syphon		Depth of Cover		Diameter Change		Material Change	
-------	--	--------	--	----------------	--	-----------------	--	-----------------	--

Digsite: Line: Area:



This plan is reproduced from or based on the OS map by Scotia Gas Networks plc, with the sanction of the controller of HM Stationery Office. Crown Copyright Reserved. Southern Gas – 100044373 and Scotland Gas – 100044366.

Warning: PDF designed for A3 colour print only with no page scaling



Contact Us
SGN Safety Admin Team:
 0800 912 1722
Email:
 plantlocation@sgn.co.uk

Date Requested: 23/09/2022
 Job Reference: 27026610
 Site Location: 582895 144642
 Requested by: Miss Monique Elsom
 Your Scheme/Reference: 680350

Scale: 1:1000 (When plotted at A3)

This plan shows the location of those pipes owned by Scotia Gas Networks (SGN) by virtue of being a licensed Gas Transporter (GT). Gas pipes owned by other GTs or third parties may also be present in this area but are not shown on this plan. Information with regard to such pipes should be obtained from the relevant owners. No warranties are given with regard to the accuracy of the information shown on this plan. Service pipes, valves, siphons, sub-connections etc. are not shown but their presence should be anticipated. You should be aware that a small percentage of our pipes/assets may be undergoing review and will temporarily be highlighted in yellow. If your proposed works are close to one of these pipes, you should contact the SGN Safety Admin Team on 0800 912 1722 for advice. No liability of any kind whatsoever is accepted by SGN or its agents, servants or sub-contractors for any error or omission contained herein. Safe digging practices, in accordance with HS (G)47, must be used to verify and establish the actual position of mains, pipes, services and other apparatus on site before any mechanical plant is used. It is your responsibility to ensure that plant location information is provided to all persons (whether direct labour or sub-contractors) working for you on or near gas apparatus. Information included on this plan should not be referred to beyond a period of 28 days from the date of issue.

Report damage immediately – KEEP EVERYONE AWAY FROM THE AREA
0800 111 999

Low Pressure Mains	
Medium Pressure Mains	
Intermediate Pressure Mains	
High Pressure Mains	
LAs	
GTs	

Some Examples Of Plant Items

Valve		Syphon		Depth of Cover		Diameter Change		Material Change	
-------	--	--------	--	----------------	--	-----------------	--	-----------------	--

Digsite: Line: Area:



This plan is reproduced from or based on the OS map by Scotia Gas Networks plc, with the sanction of the controller of HM Stationery Office. Crown Copyright Reserved. Southern Gas – 100044373 and Scotland Gas – 100044366.

Warning: PDF designed for A3 colour print only with no page scaling

APPENDIX G

GTC GAS RECORDS

APPENDIX H

SOUTH EAST WATER RECORDS
